



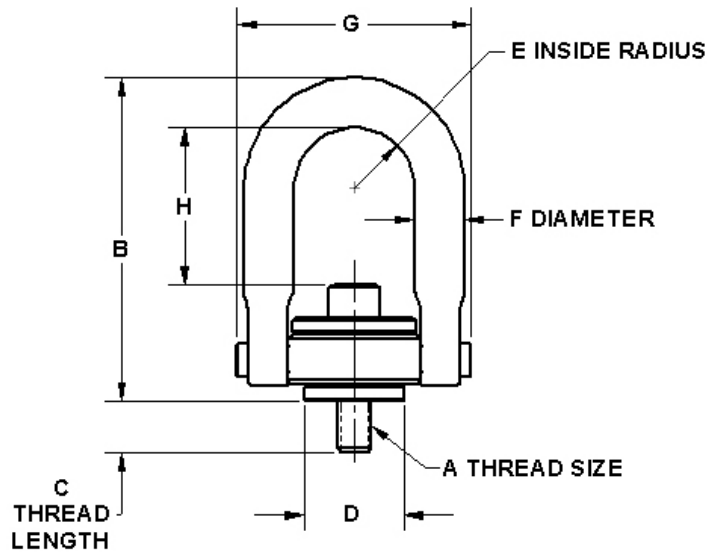
STAINLESS STEEL TRADITIONAL CENTER-PULL HOIST RINGS

Introducing our 17-PH Center-Pull Style Hoist Ring! Another option for the most popular style in the market. Not only do you get the environmental protection of stainless steel, you will see the same load capacity as the alloy steel version.

- Material: 17-PH
- Same strength/load capacity as alloy steel
- Capacities up to 5,000 lbs
- Inch and metric styles available
- Maximum operating temperature 800°F intermittent
- Maximum operating temperature 600°F continuous
- 3D Solid Models available in multiple formats
- Magnetic particle inspected

5:1 STRENGTH FACTOR **360° SWIVEL 180° PIVOT** **PROOF TESTED 200%** **PROOF TEST CERTIFICATE PROVIDED** **MADE IN THE USA**

AWRF ISO 9001:2015 CERTIFIED SMITHERS AS 9100 Rev D CERTIFIED SMITHERS CE



INCH

Thread Size A	Load Capacity (lbs)	Part Number	B (In)	Thread Length C	D (In)	E (In)	F (In)	G (In)	Standard U-Bar H (In)	Torque (ft. lbs)	Weight (lbs)	Bolt Replacement Kit Part Number
1/2-13	2500	23411-SS	4.84	3/4	1.50	0.88	0.75	3.52	2 3/8	28	2.5	23611-SS
5/8-11	4000	23414-SS	4.84	1	1.50	0.88	0.75	3.52	2 1/4	60	2.7	23614-SS
3/4-10	5000	23417-SS	4.84	1	1.50	0.88	0.75	3.52	2 1/8	100	3.0	23617-SS

METRIC

Thread Size A	Load Capacity (lbs)	Part Number	B (mm)	Thread Length C	D (mm)	E (mm)	F (mm)	G (mm)	Standard U-Bar H (mm)	Torque (ft. lbs)	Weight (lbs)	Bolt Replacement Kit Part Number
M12 x 1.75	1050	23462-SS	123	19	38.1	22.4	19	89.4	60.5	37	1.1	23662-SS
M16 x 2.0	1900	23465-SS	123	29	38.1	22.4	19	89.4	56.5	80	1.1	23665-SS
M20 x 2.5	2150	23468-SS	123	34	38.1	22.4	19	89.4	52.5	135	1.2	23668-SS

